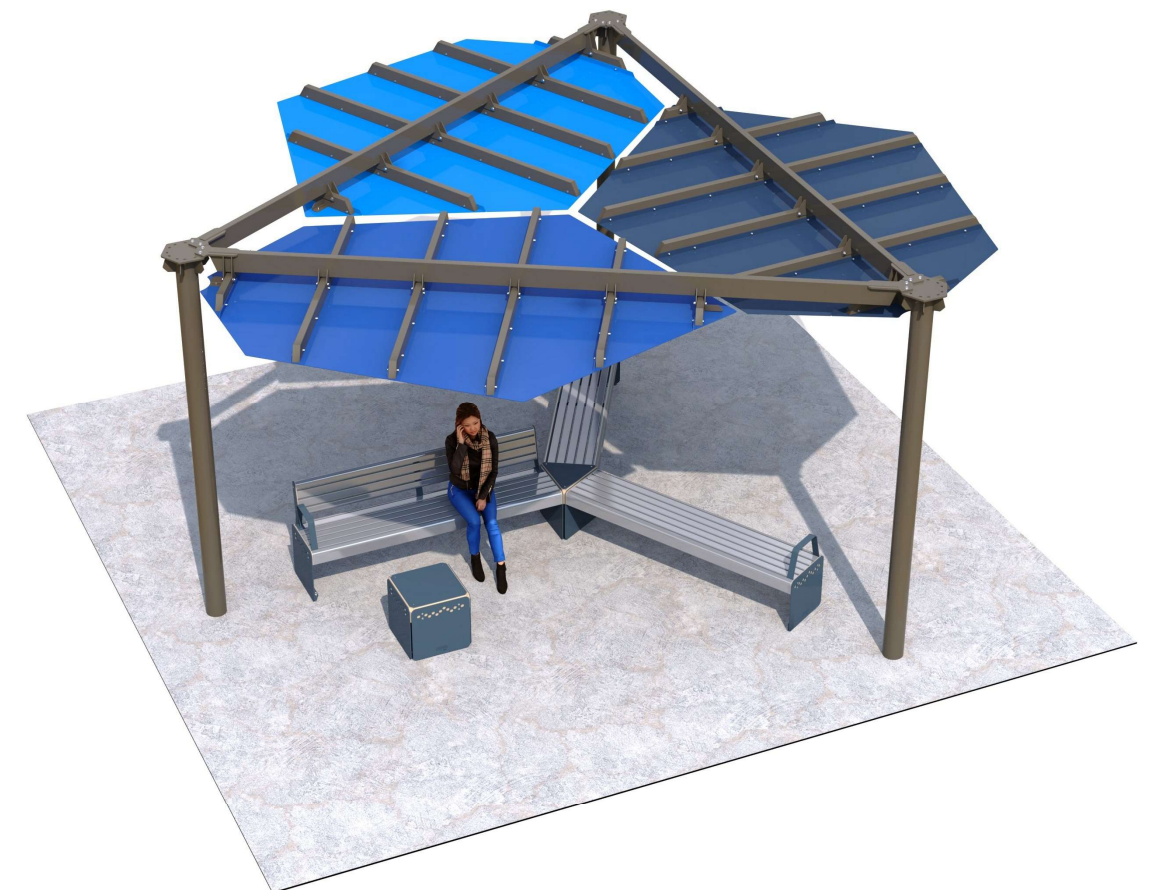


PICTORIAL VIEW - Large Layout Example

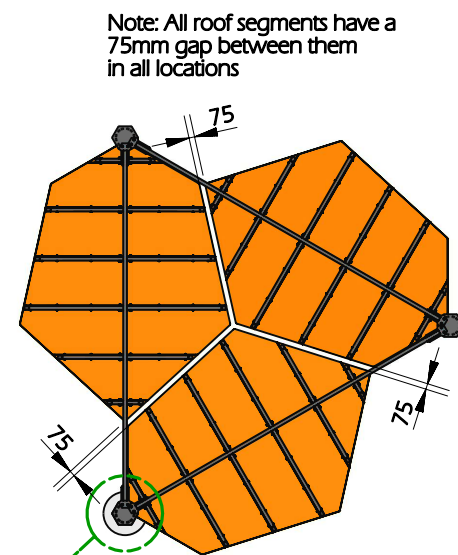


PICTORIAL VIEW - Large Layout Example - Eye Level

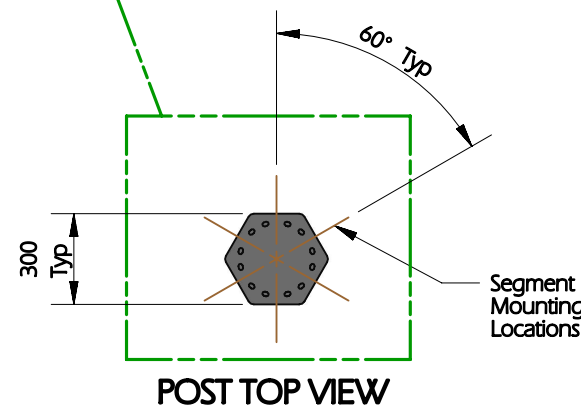


PICTORIAL VIEW - Small Layout Example



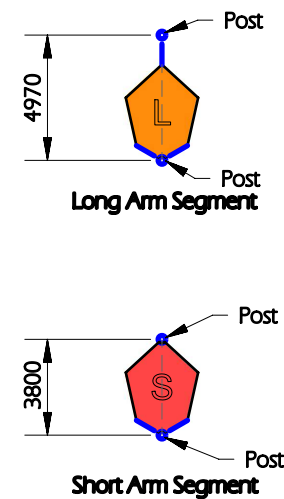


3 SEGMENT EXAMPLE



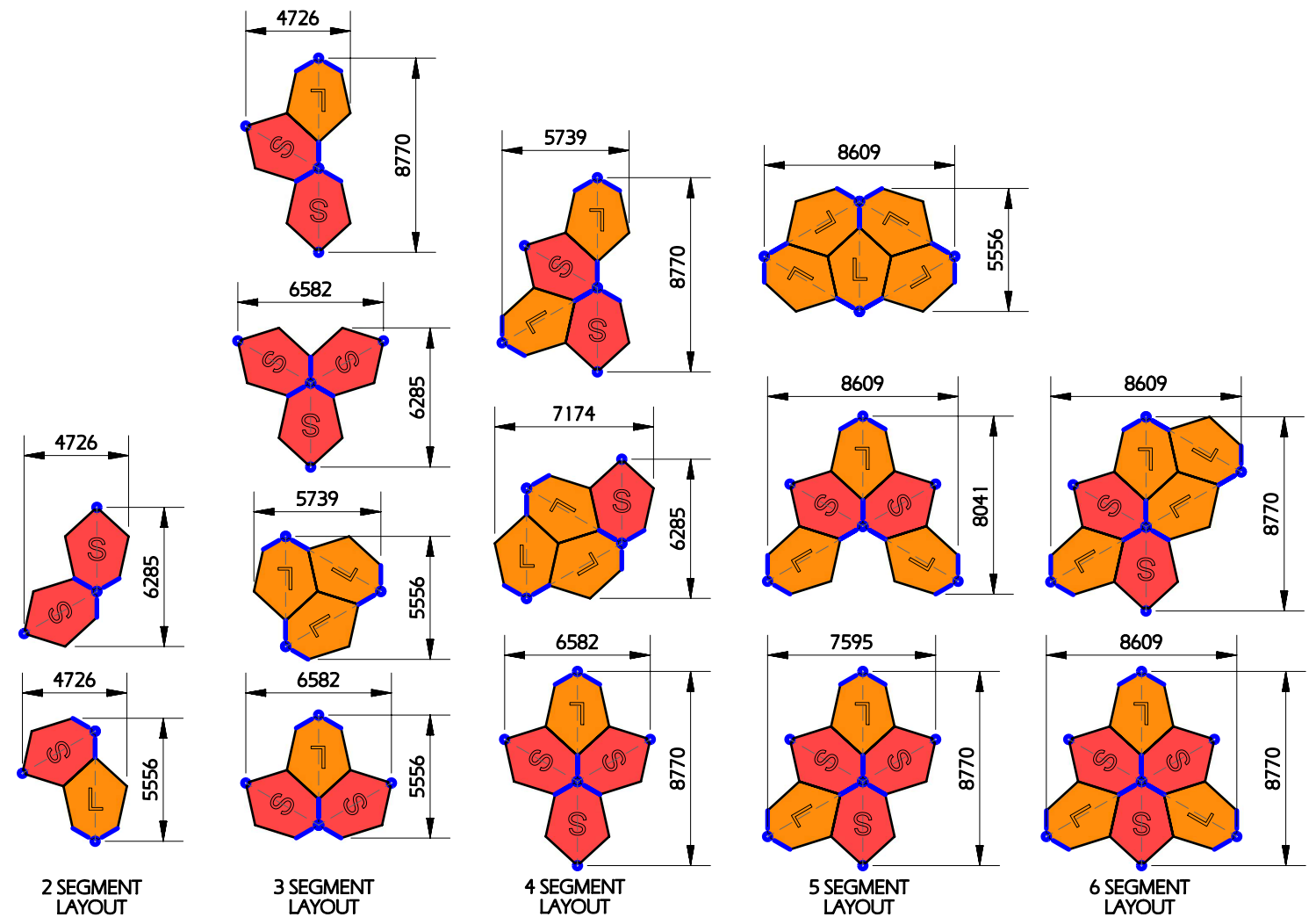
POST TOP VIEW

Post suits both Long Arm and Short Arm segments.
Segments can be connected to any of the 6 mounting positions



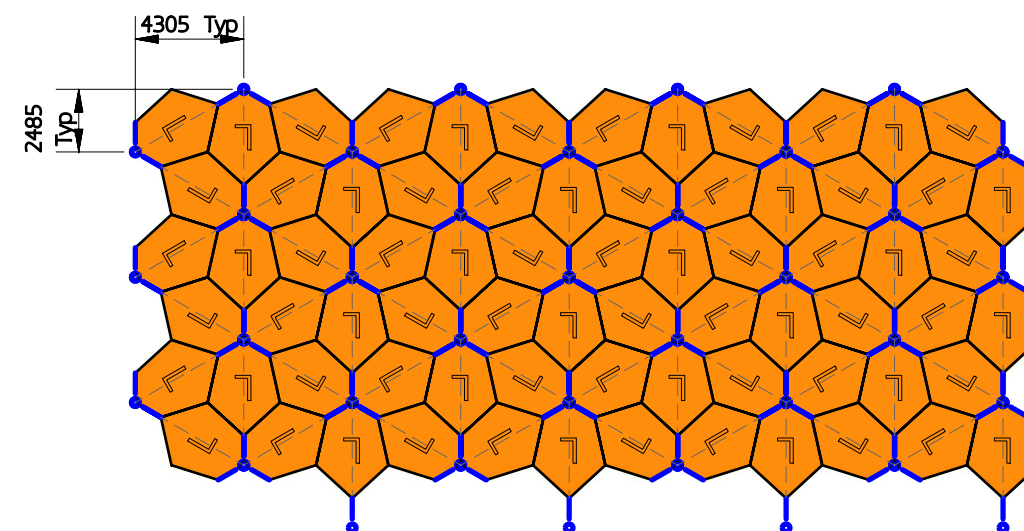
Long Arm Segment

Short Arm Segment



TOP VIEW - EXAMPLE CONFIGURATIONS (WITH MIXED SEGMENTS)

All patterns are created by overlapping the blue lines at a shared post position



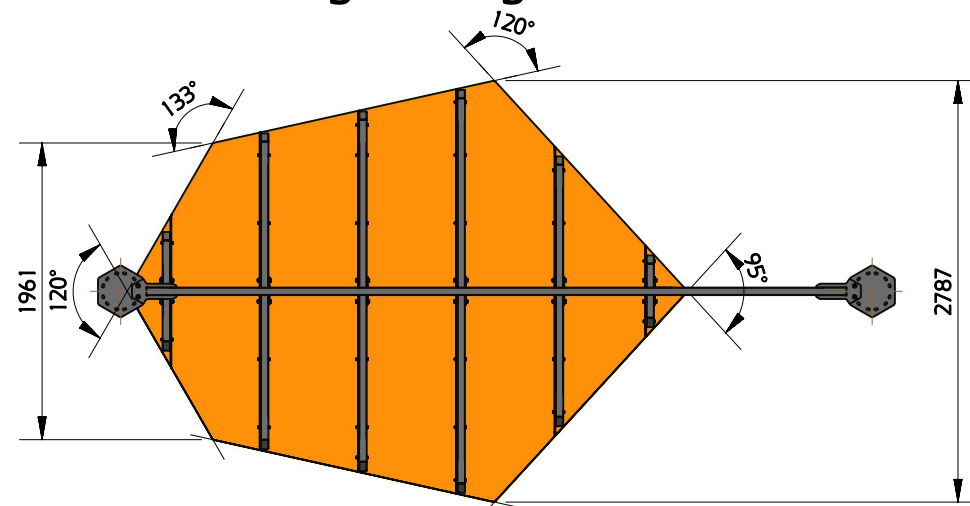
MAIN PATTERN CONFIGURATION (LONG ARM SEGMENTS ONLY)

Continuous pattern can only be created with long arm segments.
The short arm segment is used to reduce the post overhang on the outside of a pattern.

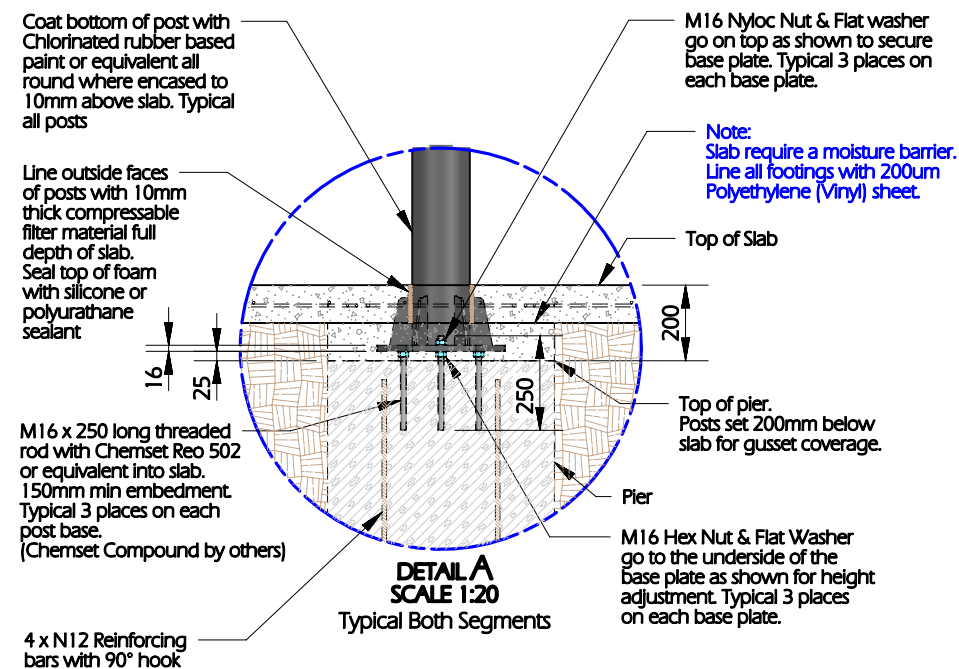
GENERAL NOTES:

1. Slab & reinforcing designed for soil Class "P"
2. Slab & trench footings to be lined with 200um Polyethylene (Vinyl) sheet (by others)
3. Compact subgrade to 95% and minimum bearing capacity of 100kPa. Deepen with 15MPa binding concrete if required.
4. Ø 600 pile to be founded 600mm into natural soil capable of supporting 200kPa or 1200mm below finished surface level whichever is deeper.

Long Arm Segment Detail

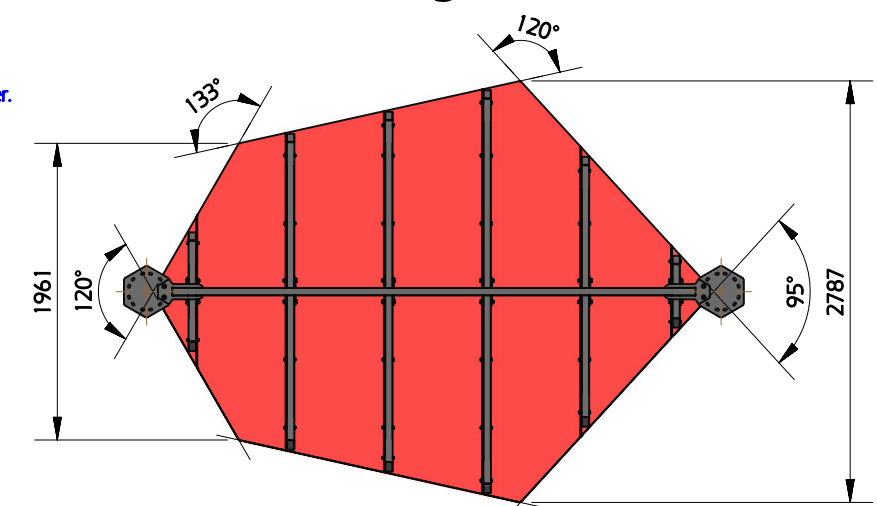


TOP VIEW
Long Arm Segment
SCALE 1:50

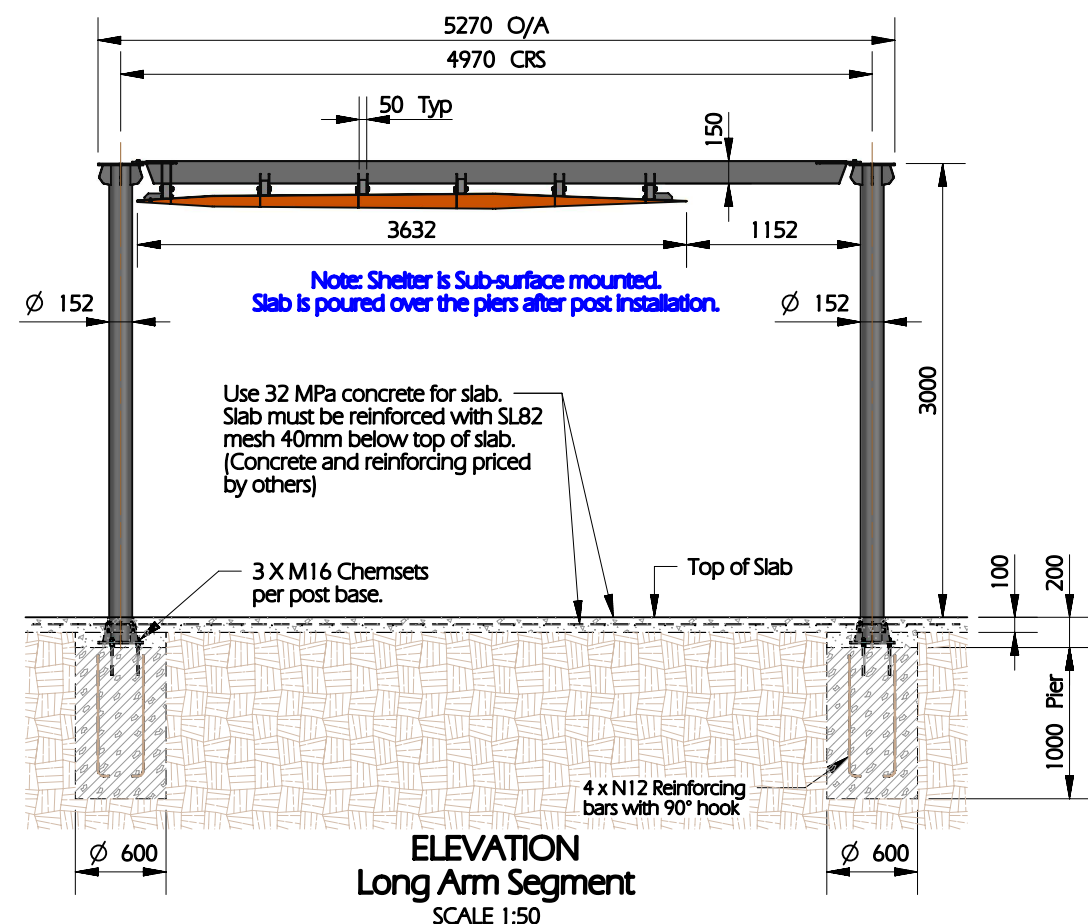


DETAIL A
SCALE 1:20
Typical Both Segments

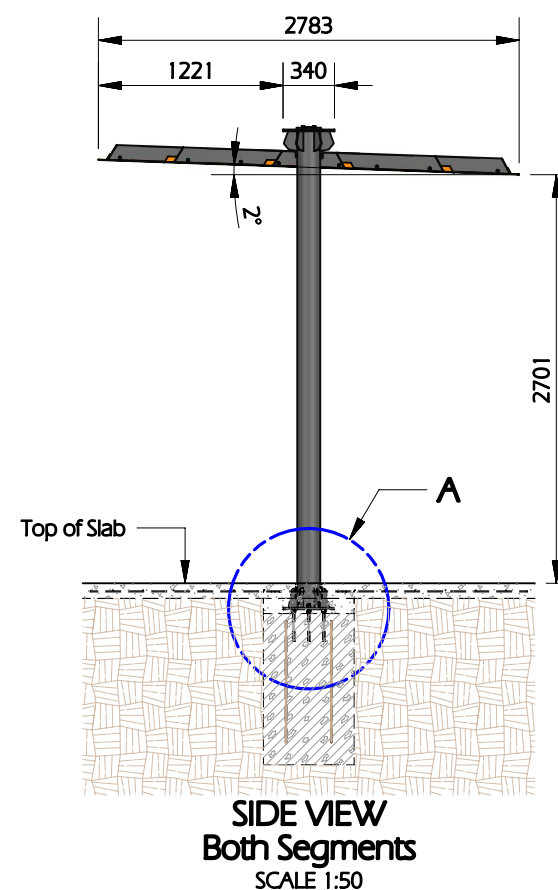
Short Arm Segment Detail



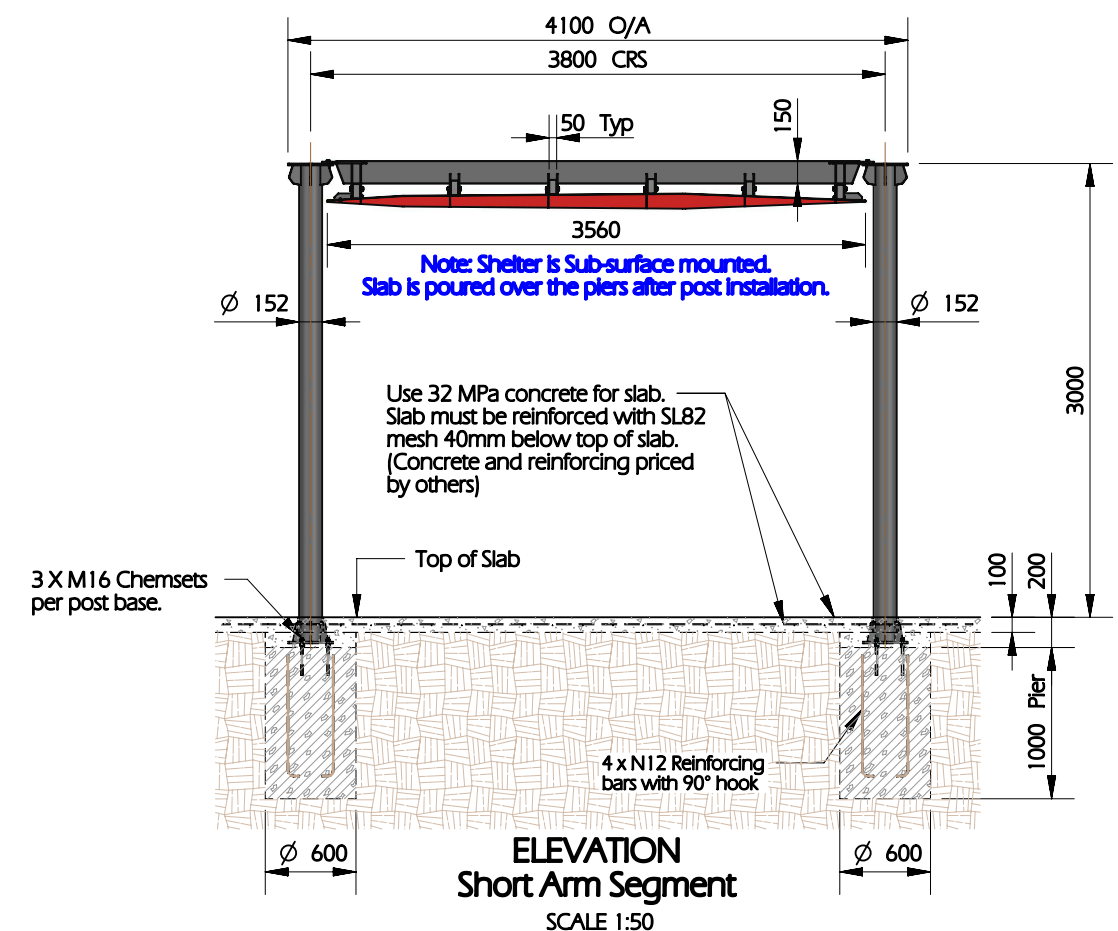
TOP VIEW
Short Arm Segment
SCALE 1:50



ELEVATION
Long Arm Segment
SCALE 1:50



SIDE VIEW
Both Segments
SCALE 1:50



ELEVATION
Short Arm Segment
SCALE 1:50