

Jalunbu Park's Splash Park, Port Douglas QLD

GX Outdoors



Port Douglas, QLD



Project Name
Splash Park

Project Partners
Urbis
Douglas Shire Council
JMAC Constructions

Installed
June 2025

Overall Project Value
\$4.75M

Challenge

Port Douglas, in tropical North Queensland, sits on the doorstep of some of Australia’s most iconic natural landscapes - the Daintree Rainforest, Mossman Gorge and the Great Barrier Reef. Yet despite its extraordinary setting, local families had limited opportunities for safe water play, with stingers and crocodiles making natural waterways unsuitable for children.

Douglas Shire Council set out to change this, transforming a sparse, underutilised park into a vibrant splash park shaped directly by community input. Feedback guided a design that was unmistakably place-based, celebrating the region’s rainforest, reef and river systems through form, materiality and colour.

The vision extended beyond a standard splash pad. The park needed to function as a full day-use destination, with integrated park seating, shade structures and picnic spaces that enabled parents to comfortably supervise children while also offering places to rest, gather and connect. Every element, from furniture to shelters, had to echo the surrounding natural environment, strengthening the sense of connection to Country.

Accessibility was essential. The entire site required full DDA compliance, and a mix of large and small shelters was needed to support different types of use: quiet nooks, group gathering spaces and open, flexible areas for families. The result is a welcoming, inclusive public space designed for all ages, inspired by the landscapes that make Port Douglas unique.

Material Requirements

Port Douglas sits in a region impacted by cyclones, heavy rainfall and salt-laden coastal air. This meant every built element needed to be exceptionally resilient. Shade structures had to be cyclone-rated for safety, while park furniture needed to withstand intense UV exposure, humidity and constant corrosion risk. The challenge was to deliver products that were durable, low-maintenance and fully accessible without compromising the cohesive, nature-inspired aesthetic that defined the park’s design vision.

Solution

GX Outdoors supplied a complete suite of modular park furniture, shelters, public BBQs and urban seating that met both the functional requirements and the project’s place-based design intent. Two-post, cyclone-rated shade structures provided strong protection while maintaining open sightlines for parents supervising water play. HYVE table settings and Frontier commercial BBQs with extended tops ensured full wheelchair accessibility and inclusive use across the site.

TimberImage™ finishes delivered the warmth and familiarity of timber with the long-term durability of aluminium, ideal for environments exposed to salt, humidity and heavy daily use. Using GX Outdoors’ semi-customisation capability, the client incorporated a bespoke Melaleuca leaf motif, laser-cut and routed into seat ends and bin enclosures. This subtle detail echoed the local rainforest and reinforced the park’s identity without overwhelming the minimalist design.

Impact

The park has transformed from a sparse space into a vibrant community hub. Children can now enjoy safe, year-round water play, while families gather under a range of shade structures and relax on Australian-made park benches. Semi-customised details, inspired by local rainforest and reef landscapes, give the park a unique identity, creating a welcoming, functional, and resilient public space for all.

Colour & Laser-Cut Design Customisations

Every community is unique, and semi-customisation ensures that park furniture projects reflect local character while remaining functional and durable. For the Port Douglas splash park, GX Outdoor adapted proven modular park furniture and park shelters designs to suit the site’s accessibility requirements, cyclone-prone environment, and nature-inspired theme.

Semi-customisation allows clients to achieve tailored, cost-effective street and park furniture solutions, including:

- **Amendments to Size** - Adjust length, width, and height to suit specific needs (e.g. wheelchair accessibility).
- **Laser Cutting** - Integrate logos, patterns, or artwork into panels for a distinctive finish.
- **Colours, Combinations & Finishes** - Choose from 55+ colour options and finishes, with mix-and-match combinations for dynamic effects.
- **Design Modifications** - Configure panels, screens, and cabinets; customise layouts or include options such as sinks and barbecue fittings.

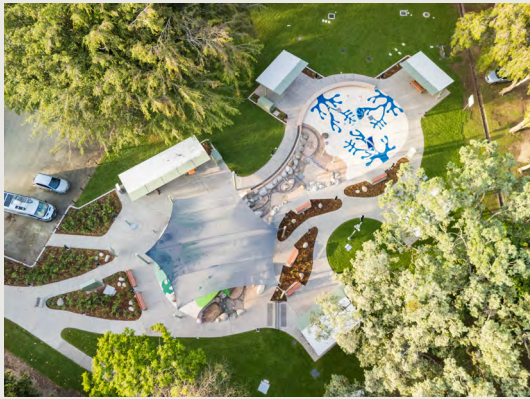
By leveraging these options, the Port Douglas splash park showcases how customisable street furniture and Australian-made park furniture can deliver functional, inclusive, and visually engaging public spaces that connect deeply to place.

About GX Outdoors

For over a decade, GX Outdoors has redefined community furniture and infrastructure. Australian-made, durable, and sustainable, GX products are designed to meet the real-world needs of councils and architects. Semi-customisation ensures faster delivery and lower costs than bespoke projects, while still creating unique place-making outcomes. The result? Spaces that bring people together and endure for generations.

SEE SEMI-CUSTOMISTION DESIGNS





[SEE MORE PROJECTS](#)

Products

Riverside Cantilever Shelter
 HYVE Table Setting
 HYVE Bench Seat
 Integra Ex Bin Enclosure
 Frontier BBQ